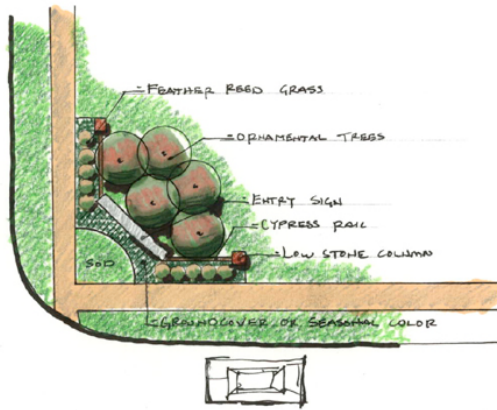
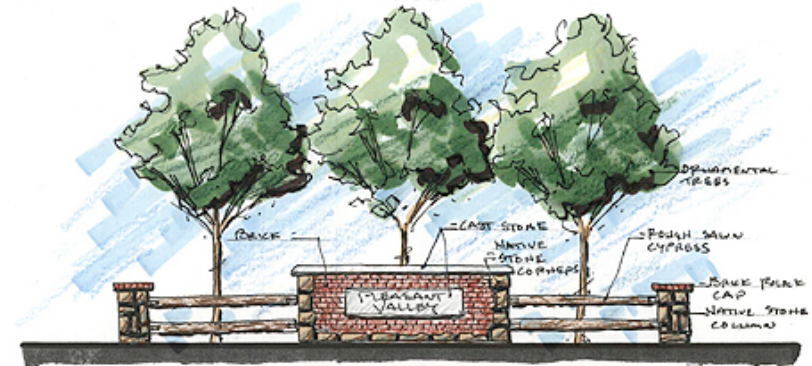


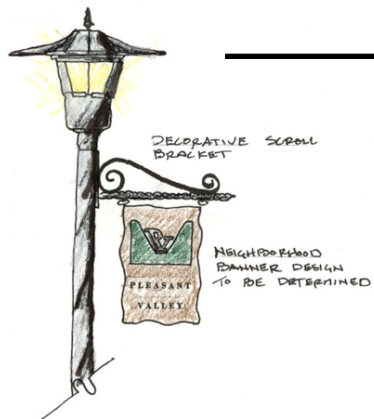
Pleasant Valley Drive Neighborhood Entry Sign Elevation



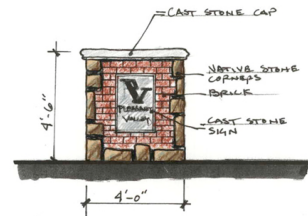
Secondary Entry Sign Plan



Secondary Entry Sign Elevation



Neighborhood Identity Banner



Monument Sign



222 Cottondale Lane, Suite 100
Little Rock, Arkansas 72202
501.666.4546

Landscape Architecture
Planning
Urban Design
**LARSON
BURNS
SMITH**
133 South Isard Street
Little Rock, Arkansas 72201
501.378.0200

NOT FOR CONSTRUCTION
Site survey not available to designers
therefore schematic drawings
may show discrepancies compared to
existing site conditions.